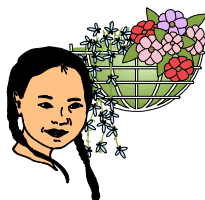


## Associate in Arts Degree



## Biological Science

**Transfer Institution: Florida State University**

**Code** 1019 **Program Length** 60 credits

# 2003-2004

For more information  
Contact:

**Student Services**  
**Chipola College**  
**(850) 718-2266**



This Associate in Arts degree program is designed for students who plan to transfer and earn a degree in any track within the Biology curriculum at Florida State University.

This is an excellent major for pre-med students. However, one year of general physics is required for pre-med majors; students should complete the physics sequence during the junior year at FSU.

For additional program information, [visit the FSU website](#).

Possible employment opportunities for this major include biological scientist, biotechnologist, biostatistician, microbiologist, epidemiologist, molecular biologist, marine biologist, forensic biologist, botanist/zoologist, research biologist, fisheries biologist, geneticist, wildlife ecologist, teacher, environmental resource manager, environmental scientist. For more information please visit [The Occupational Outlook Handbook website](#).

*The courses listed on this guide are not to be construed as a contract between the student and Chipola or the University. Course requirements may change each year. You are encouraged to work closely with your advisor.*

### Entrance Requirements

FSU WILL DENY ADMISSION TO ANY STUDENT WHO HAS NOT SATISFIED THE STATE FOREIGN LANGUAGE REQUIREMENT. This major is in the College of Arts and Sciences and requires completion of a foreign language through the 2200 level before graduation from FSU.

FSU requires competency in oral communications for graduation. If students took a speech course in high school or were members of a debate team, they may exempt this requirement. If not, students should take SPC 2600 at Chipola to satisfy this requirement.

FSU requires basic [computer proficiency](#). Students must demonstrate email, Internet, word processing, & spread sheet skills; demonstrations are monitored by the FSU Computer Science department. CGS 1060, CGS 1100, or EME 2040 will satisfy this requirement.

A student who has earned more than five unsatisfactory grades (U, F, or D) in courses or in prerequisites required for the major in biological science (biological science, chemistry, physics, mathematics, statistics, and approved outside electives) at FSU or elsewhere, whether or not repeated, will not be permitted to graduate with a degree in biological science from FSU. A minimum 2.0 GPA (no forgiveness) required in the above courses.

PHY 1053C & 1053L/PHY 1054C & 1054L or PHY 2048C & 2048L/PHY 2049C & PHY 2049L is encouraged if it can be taken at Chipola.

### FRESHMAN YEAR

1st Semester		Sem. Hrs.	2nd Semester		Sem. Hrs.
ENC 1101	Communication Skills I	4	ENC 1102	Communication Skills II	4
CHM 1045 & 1045L	General Chemistry I & Lab	4	CHM 1046 & 1046L	General Chemistry II & Lab	4
XXX XXXX	HUMANITIES	3	MAC 1311	Calculus & Analytic Geometry I	5
MAC 1140 & 1114	Precalculus Algebra & Trig	6	XXX XXXX <sup>2</sup>	SOCIAL SCIENCE	3
XXX XXXX	SOCIAL SCIENCE <sup>1</sup>	3			
SLS 1101	Orientation	1			
<b>TOTAL</b>		<b>21</b>	<b>TOTAL</b>		<b>16</b>

### SOPHOMORE YEAR

1st Semester		Sem. Hrs.	2nd Semester		Sem. Hrs.
XXX XXXX	COMMUNICATIONS (Gordon Rule Course)	4	XXX XXXX	HUMANITIES	3
BSC 2010 & 2010L	Integrated Princ of Biology I & Lab	4	BSC 2011 & 2011L	Integrated Princ of Biology II & Lab	4
CHM 2210 & 2210L	Organic Chemistry I & Lab	5	CHM 2211 & 2211L	Organic Chemistry II & Lab	4
MAC 2312	Calculus & Analytic Geometry II	4	XXX XXXX	ELECTIVE	1
<b>Total</b>		<b>17</b>	<b>Total</b>		<b>12</b>

<sup>1</sup> FSU requires an international/diversity course for graduation. The Chipola courses which meet both a social science and a diversity requirement include GEA 2001, GEA 2002, REL 2300, SYG 1010, WOH 2012, and WOH 2022. It is strongly recommended that one of these courses be completed before earning the AA degree.

<sup>2</sup> One history course is required for graduation from FSU; AMH 2010/2020 or WOH 2012/2022 will satisfy this requirement.