

$y = 2x + 4$ and passes through $(-2, -7)$ 19.

$x = -2$ 20.
passes through $(-2, -7)$.

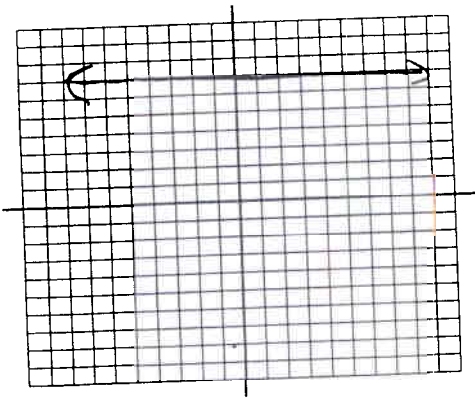
$\frac{3}{4}$ 21.

\mathbb{R} 22a.

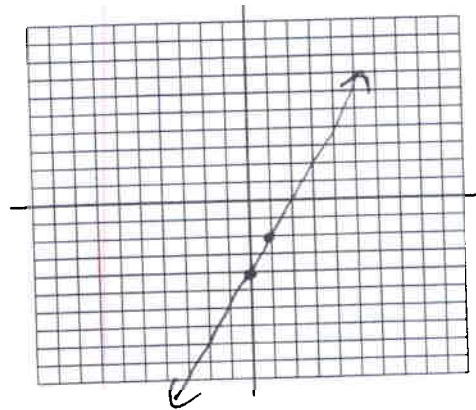
$(-2, \infty)$ 22b.
 $\{y \mid y \geq -2\}$

Sketch the graph of the following

23. $y = 7$



24. $f(x) = 2x - 4$



25. $2x + 3y = 12$

